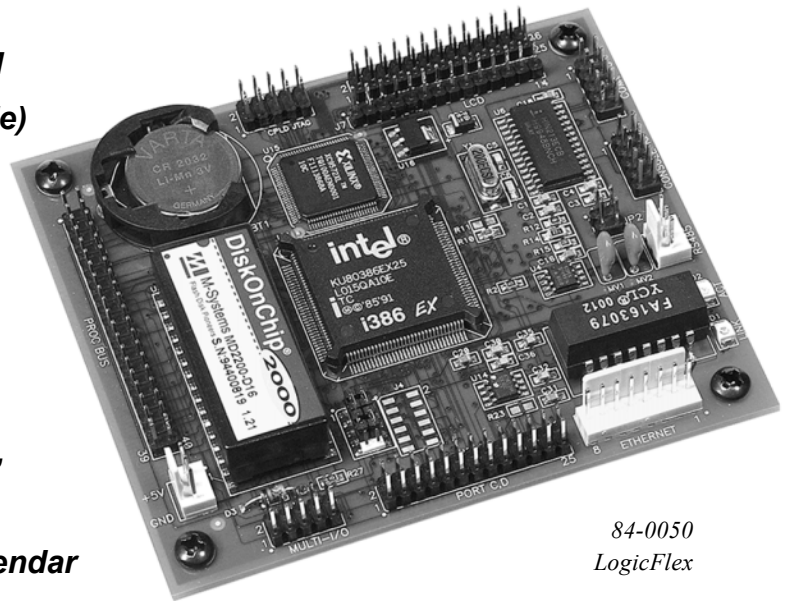


LogicFlex

- **TCP/IP & DOS with Flash File System**
- **386 Ex, 25 MHz / 512K Flash, 512K SRAM**
- **10BASE-T Ethernet (NE2000 Compatible)**
- **46 Digital I/O Lines**
- **In-Circuit-Programmable Xilinx CPLD for Port I/O or User Logic**
- **PC Compatible Serial Ports**
 - 1 - RS232
 - 1 - RS232 / RS485, Software Selectable
- **32 Pin Dip Socket to accept 512K SRAM, 512K Flash, or M-Systems DiskOnChip**
- **Watchdog Timer & Hardware Clock/Calendar**
- **5V DC Power, 2 Watts nominal**
- **Dimensions 4.2" x 3.6" (106.7mm x 91.4 mm)**



84-0050
LogicFlex

The **LogicFlex** addresses the demand for a compact, expandable SBC with flexible I/O and Ethernet. Targeted for designs requiring a large number of I/O lines or user designed logic, this controller is an ideal platform for bridging existing equipment to Ethernet networks.

The **LogicFlex** features a 386 DOS computer, 10BASE-T Ethernet, and an in-circuit-programmable Xilinx CPLD. The DOS operating system allows for design and debugging in a familiar environment. PC compatible serial ports and bit I/O make system integration a snap. Peripheral boards are also available to add serial ports, A/D, D/A, high current drivers, relays and isolated I/O for many data acquisition and control applications.

Based on the Intel 386Ex microprocessor, the **LogicFlex** includes an extensive array of integrated peripherals. Onboard Ethernet allows direct connection to 10BASE-T networks. The serial ports, counter/timers, and interrupt controller are fully compatible with the IBM PC at both the hardware and software levels. With additional features such as the watchdog timer, RS-485 serial port capability, hardware clock/calendar, flexible storage options, and aggressive pricing, the **LogicFlex** is also a great choice for new embedded designs requiring network connectivity.

The **LogicFlex Development Kit** (99-0051) includes a **LogicFlex** single board computer, Programming Cable, Connector Kit, Ethernet Cables, 110 VAC Adapter, Setup guide, Schematic, and CD with Borland C/C++ V4.52 Compiler, utilities, sample programs and documentation. (220Vin to 110V transformer (70-0006) available.)

Also included are sample programs and source code for the TCP/IP stack and web server that can be compiled with the Borland C/C++ package.

JK microsystems, Inc.

1403 5th St. Suite D, Davis, CA 95616
<http://www.jkmicro.com>

Phone (530)297-6073
Fax (530)297-6074

LogicFlex

Specifications

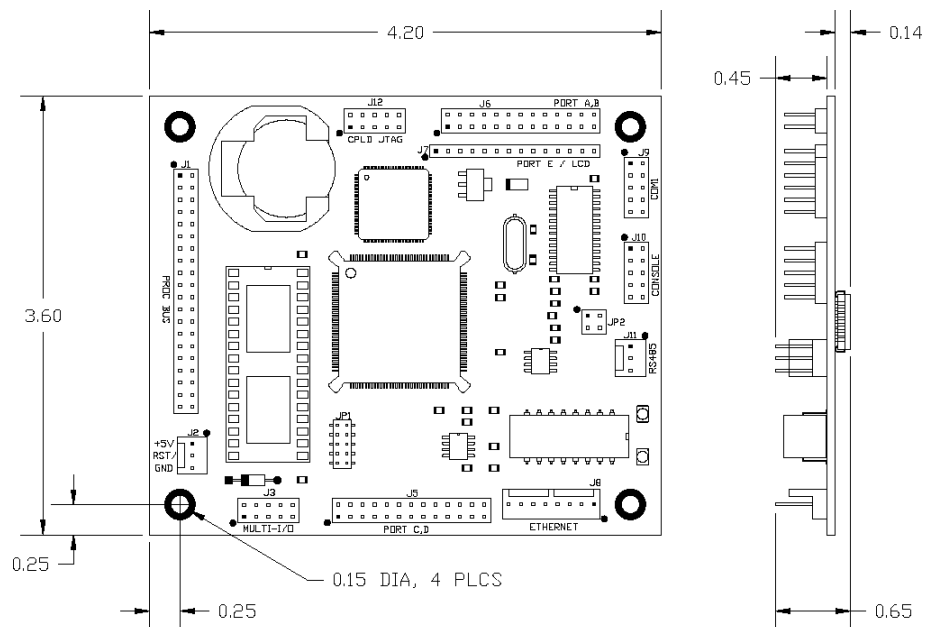
Processor	Intel 386Ex, 25Mhz	Temperature	-4 to 185 °F (-20 to +85 °C)
Operating System	XDOS (MS/PC DOS 3.3 compatible)	Weight	2.6 oz (80.9 gm)
Memory	512K SRAM, 512K Flash	Dimensions	4.20" x 3.60" x 0.65" (106.7mm x 91.4mm x 16.5mm)
Ethernet	10BASE-T, NE2000 compatible Link status and Activity LEDs		
Serial Port 1	RS-232 with 5 handshake lines COM1, address 0x3F8, IRQ 4 115200 baud maximum		
Serial Port 2	RS-232 no handshaking or RS-485 half duplex, COM2, address 0x2F8, IRQ 3 115200 baud maximum		
Digital I/O	46 Bits: P1.4-P1.7 & P3.3-P3.4, Pin configurable as input or output P3.3 & P3.4 configurable as interrupts 8mA source/sink. Ports A - E, Byte configurable as input or output, 4mA source/sink. State change interrupt capability on Ports A & B.		
Watchdog	Programmable Timeout, Generates Hardware Reset		
Sync. Serial	Full duplex, Independent Rx and Tx clocks, Master or Slave operating mode		
Supply Power	5V DC ±5%, 2 Watts (nominal)		
Humidity	5 - 90%, non-condensing		

Connectors and Jumpers

J1	Processor Bus
J2	Power
J3	Multi-I/O Bus (General I/O)
J5	IO Ports C and D
J6	IO Ports A and B
J7	IO Port E
J8	Ethernet
J9	COM1
J10	COM2 (Console)
J11	RS-485
J12	CPLD JTAG
JP1	Socket Memory Type & Boot Memory Location

Optional Features

- Additional M-Systems DiskOnChip, 512K SRAM or 512K Flash
- Peripheral boards for I/O expansion
- Character LCD & Matrix keypad



JKmicrosystems, Inc.

1403 5th St. Suite D, Davis, CA 95616
<http://www.jkmicro.com>

Phone (530)297-6073
 Fax (530)297-6074